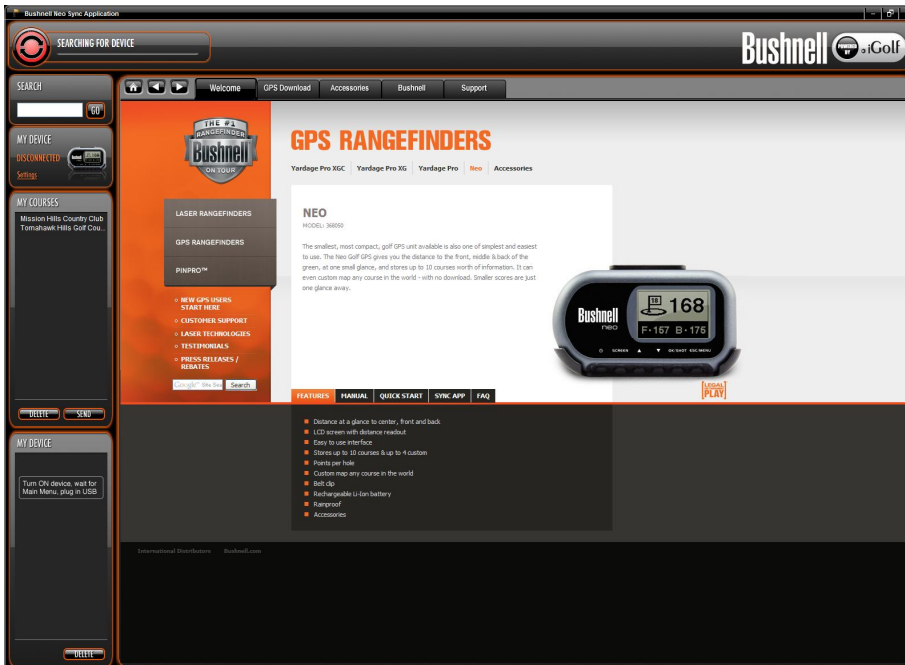


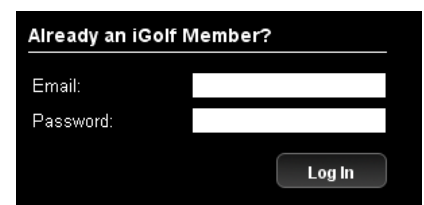
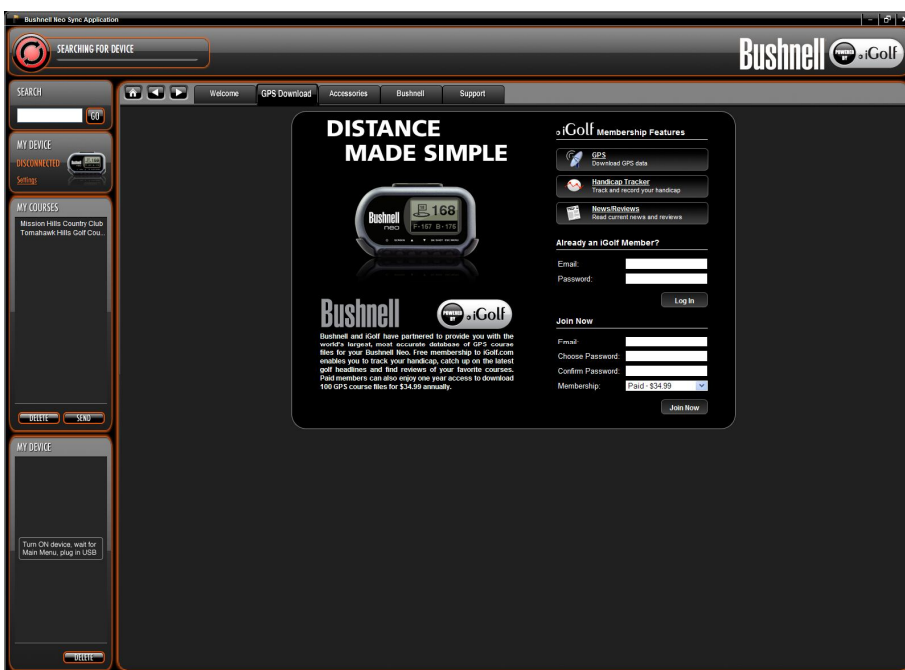
# Downloading/Transferring Golf Courses



Open the Application by double clicking the Application icon on the desktop. Once the application is opened you will see the Bushnell Golf website. From here you will notice:

- Top left corner: states is the unit is connected (this will state it is searching for the device until the GPS is powered up and plugged into the USB port)
- My Courses: Alpha list of golf courses saved to your computer
- My Device: displays golf courses that are saved to your Golf GPS

To begin downloading golf courses you will need to select GPS Download



This will direct you to the page to create your account. Or if you already have an account created you can log in.

# Downloading/Transferring Golf Courses

Home - [Logout](#) - [About iGolf](#)  
© 2008 L1 Technologies Inc. All rights reserved.  
Searching 31,780 Golf Courses

Join Now

Email:

Choose Password:

Confirm Password:

Membership:

If you are creating account you will need to enter your information into the profile. You will also need to enter the serial number that is printed on the GPS unit.

On the Bushnell Neo, XG and also XGC you will need to pay the \$34.99 per year charge to activate there account.

On the Bushnell Yardage Pro you can create your account and have one free trial download. (This file will last 45-days) If you want to download another course you will need to upgrade your account to a paid membership.



Once you have logged into your account you will see the Profile page.  
From you will search for your first golf course.

To the right of the iGolf logo you will see the option for “**GPS Courses**” [click here](#)

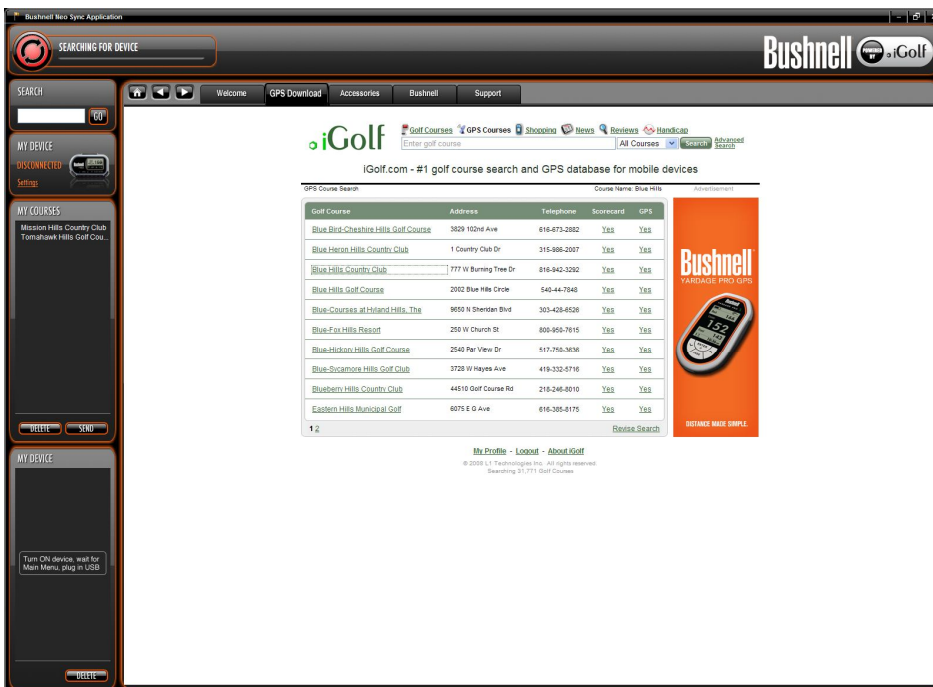
# Downloading/Transferring Golf Courses



Enter golf course

Now you will need to type in the name of the golf course.

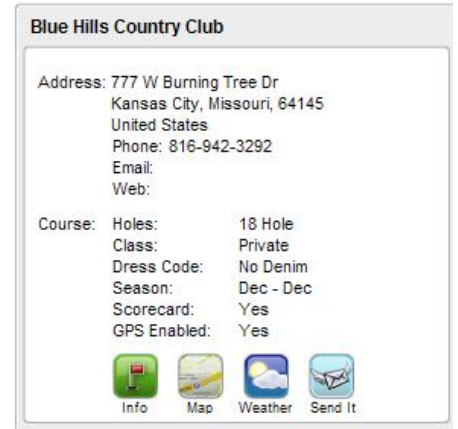
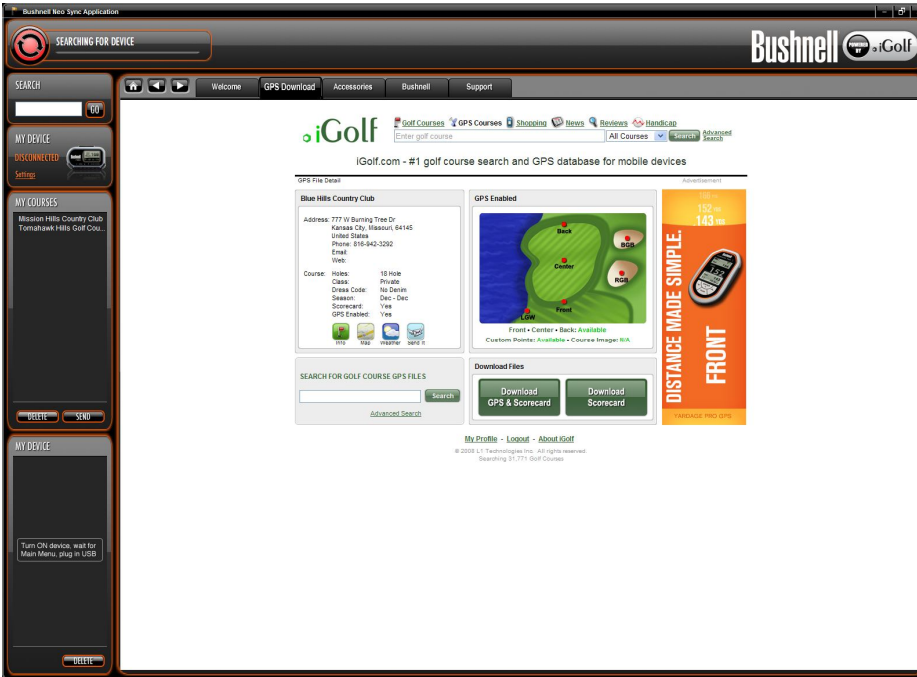
*Note: Less is more, is the name of the Golf course is Torrey Pines Country Club, enter "Torrey Pines"*



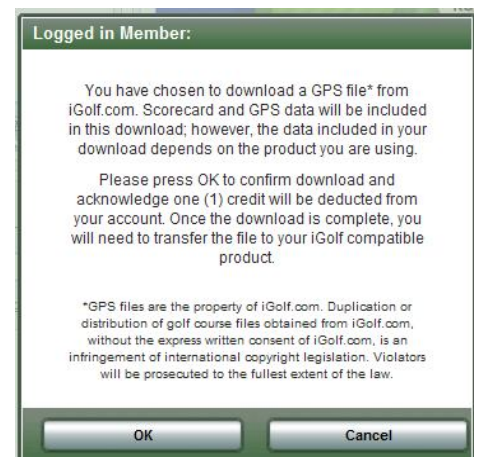
Blue Hills Country Club

Once you have searched for the golf course there will be a list of courses that will appear. Once you have identified the course that you were looking for please select the name of the course by clicking on it.

# Downloading/Transferring Golf Courses

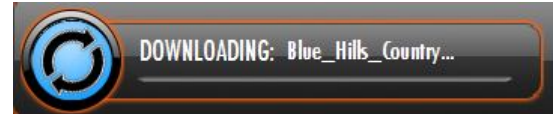
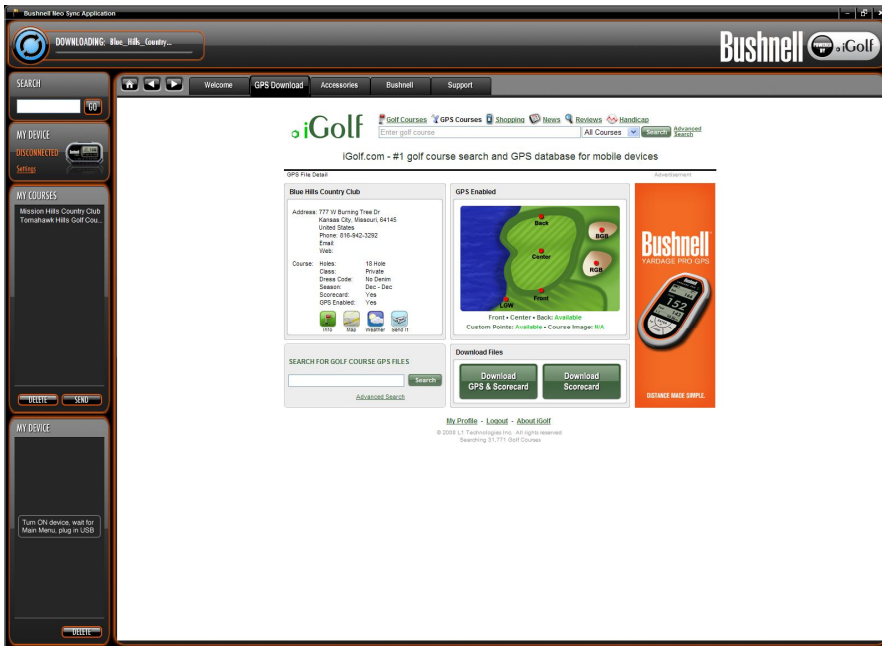


Now that you have selected the golf course. You will get a screen that shows you all the information for this course. You now need to hit the “Download GPS and Scorecard”

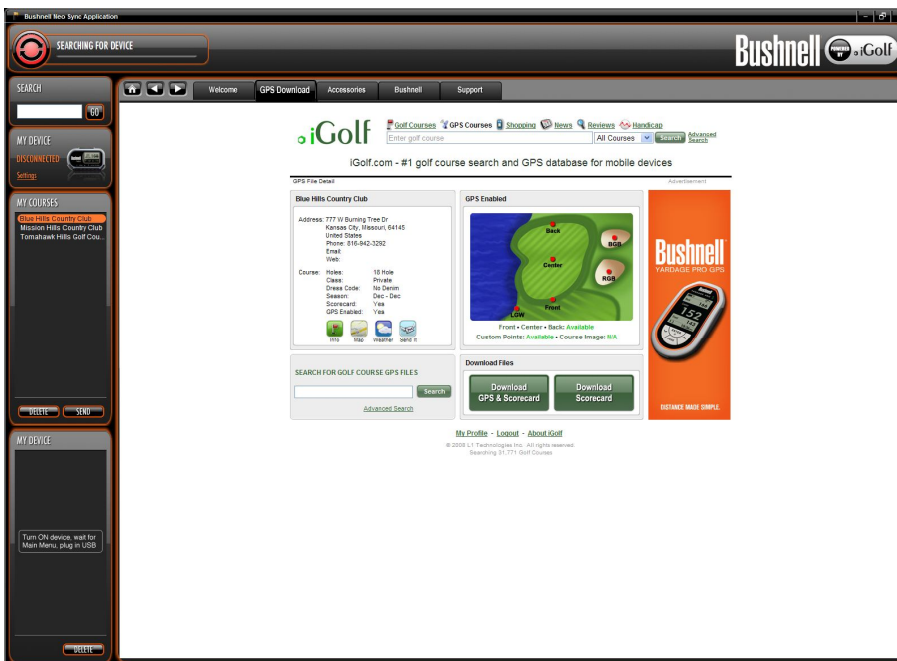


A screen is going to pop up stating that you are about to use a credit. Press OK

# Downloading/Transferring Golf Courses



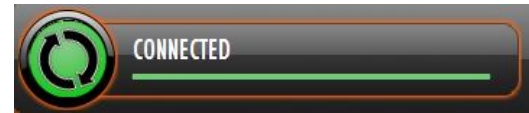
In the top left corner you will see that circle turn blue and it will download the golf course to the computer.



Once this is completed you will see that golf course appear in the **My Courses** column

You will now need to connect the Golf GPS unit to the computer. Please power the GPS up to the Main Screen then plug in via USB (If you have not already done this)

# Downloading/Transferring Golf Courses



Once the unit is connected you will see the circle in the top left corner show Connected.



After the device is connected it will read the device to see if there are any golf courses already on the unit.  
(This process is very fast you might not see it)

# Downloading/Transferring Golf Courses



Once the computer has read the device you will see under My Device on the left hand side of the screen, what courses are on the GPS, if this is the first time it will appear to be blank.

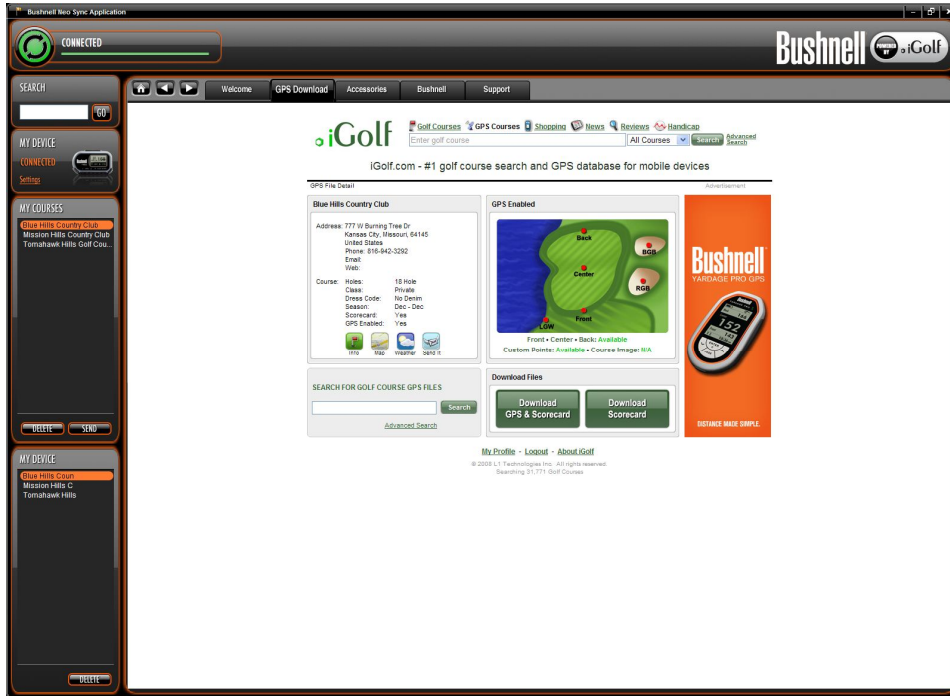


To send the golf course to the GPS unit you will select the golf course from the My Courses portion then hit Send. In the top left corner you will see that the circle will state that it is sending it to the device.

You can also drag and drop the golf course from the My Course area to My Device.

*Note: If you have added any type of custom points to the golf course you can back up the file on the computer by dragging it from the device to My Courses.*

# Downloading/Transferring Golf Courses



When the golf course is completely sent to the device the golf course will appear in the lower left corner under My Device

You are now done installing downloading and sending the golf course to the GPS unit. This will be the same on all of the devices, Neo, Yardage Pro, XG, XGC.